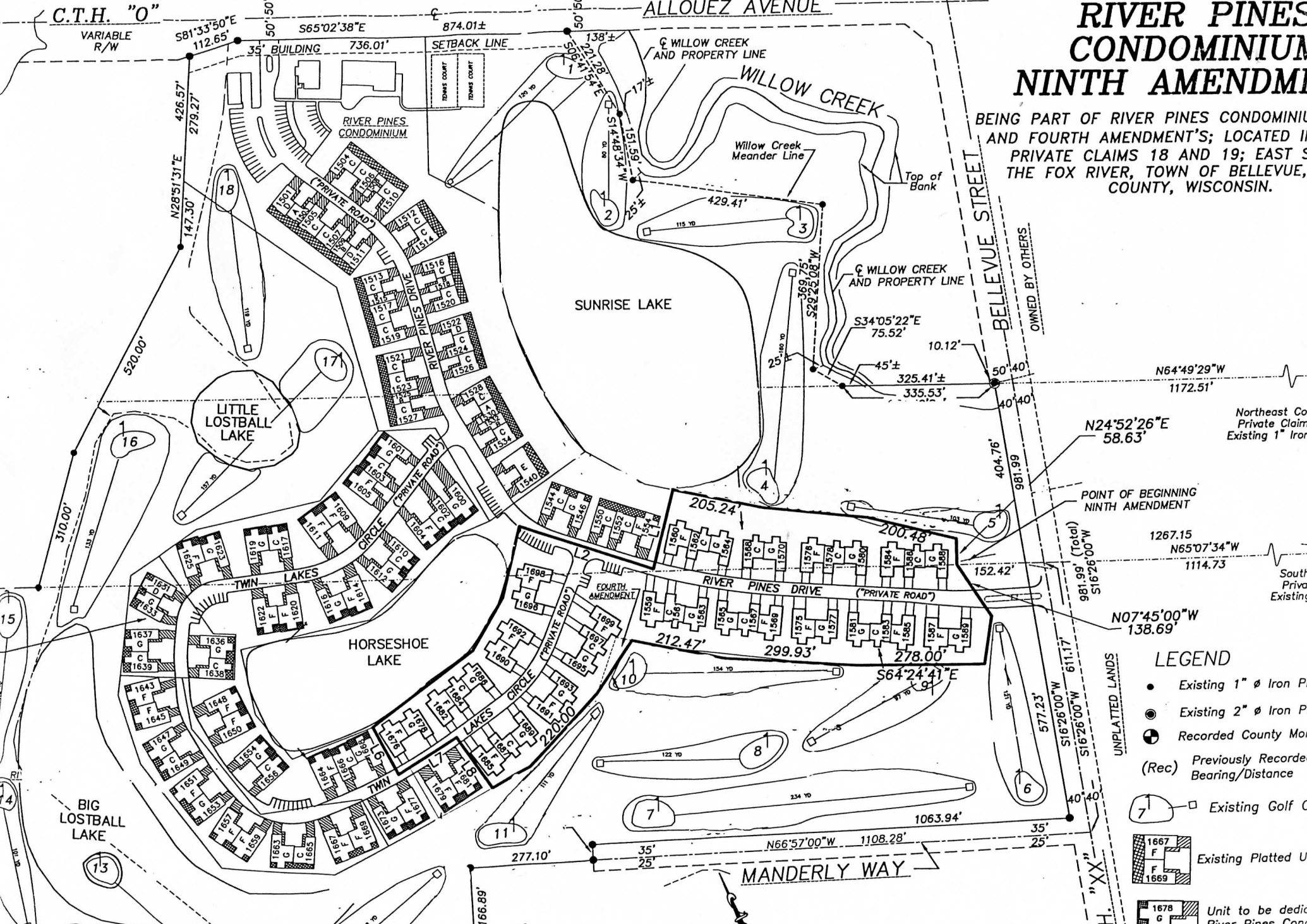


C.T.H. "O"

ALLOUEZ AVENUE

RIVER PINES CONDOMINIUM NINTH AMENDME

BEING PART OF RIVER PINES CONDOMINIUM AND FOURTH AMENDMENT'S; LOCATED IN PRIVATE CLAIMS 18 AND 19; EAST S THE FOX RIVER, TOWN OF BELLEVUE, COUNTY, WISCONSIN.



N64°49'29"W
1172.51'

N24°52'26"E
58.63'

Northeast Cor Private Claim Existing 1" Iron

POINT OF BEGINNING NINTH AMENDMENT

1267.15
N65°07'34"W
1114.73

South Privat Existing

N07°45'00"W
138.69'

LEGEND

- Existing 1" ϕ Iron Pipe
- ⊙ Existing 2" ϕ Iron Pipe
- ⊕ Recorded County Monument
- (Rec) Previously Recorded Bearing/Distance
- Existing Golf Course
- ▨ Existing Platted Unit
- ▩ Unit to be dedicated to River Pines Condominium

UNPLATTED LANDS

"XX"